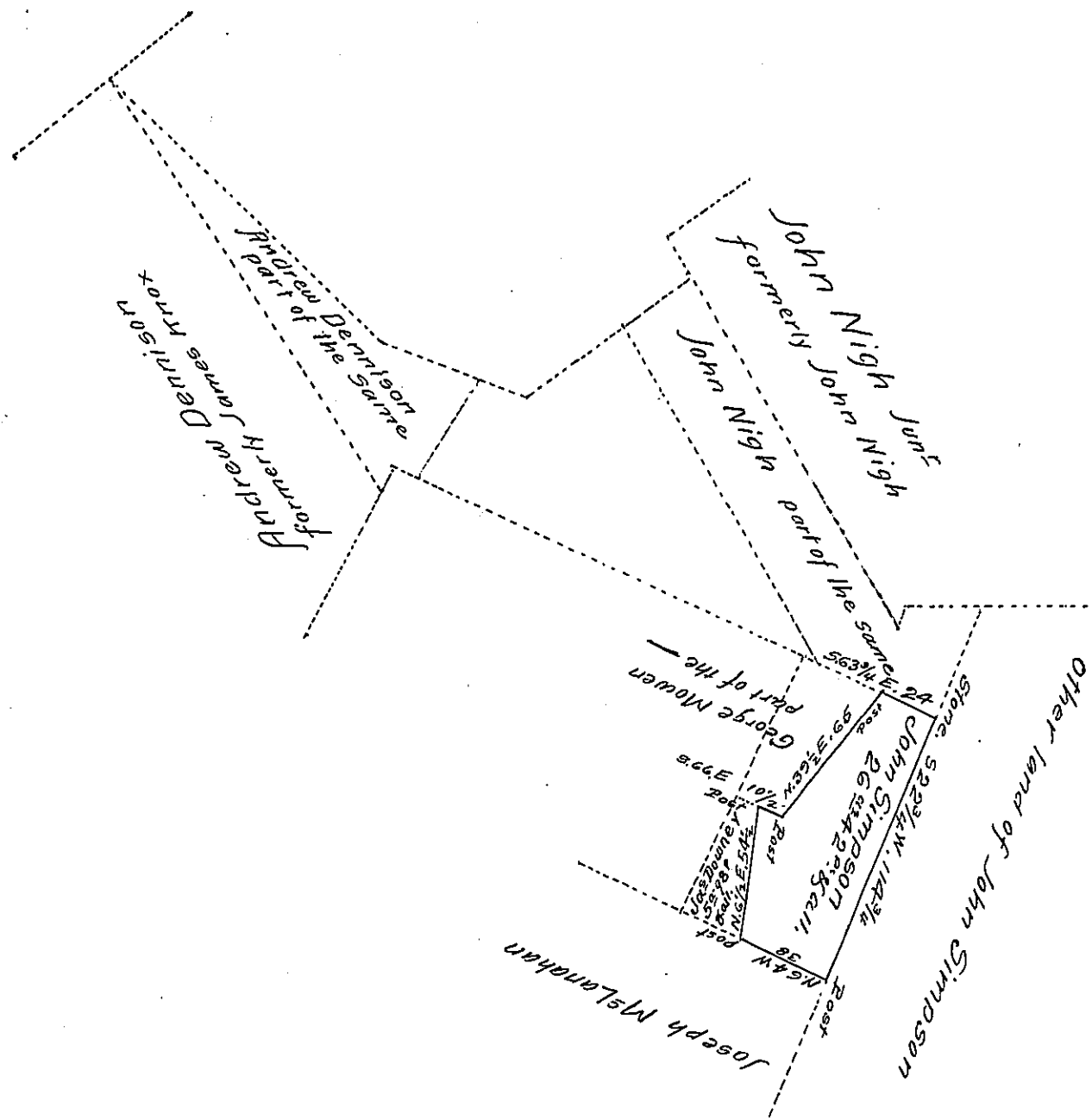


FORM No. 1.



Draught of a part of a tract of Land situate in Antrim Township  
Franklin County (formerly Cumberland County) Containing  
Twenty Six acres & forty two perches & allowance of Six p  
Cent for Roads. Being part of a Tract of 155<sup>a</sup> 110 p & allowance

Surveyed in pursuance of Warrant granted John Waggerly for  
100<sup>a</sup> dated the 16<sup>th</sup> day of May 1763.

Resurveyed and laid off the above from the other  
part for Patenting for John Simpson the 18<sup>th</sup> day of March  
1815

Arch<sup>d</sup> Fleming D.S.

Rich<sup>d</sup> T Leech Esq  
Surveyor General of Penn<sup>a</sup>

IN TESTIMONY that the above is a copy of the original remaining on file in  
the Department of Internal Affairs of Pennsylvania, made  
conformably to an Act of Assembly approved the 16th day of  
February 1833, I have hereunto set my hand and caused  
the Seal of said Department to be affixed at Harrisburg,  
this seventeenth day of May 1907

Henry Howell

Secretary of Internal Affairs.